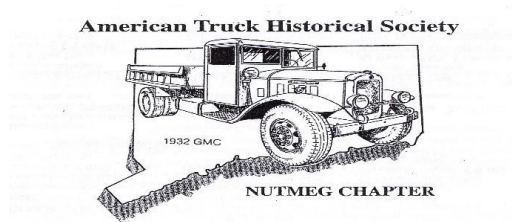


# ATHS NUTMEG CHAPTER STEERING COLUMN

March – April 2024 - OUR 41st YEAR

DON ARNAUCKAS, EDITOR  
14 AVALON AVENUE  
OAKVILLE, CT 06779

**Next Meeting: March 17, 2024**  
**Pfahl's Mack & Antique Truck**  
**Restorations**  
**73 East Street, Route 132**  
**Bethlehem, CT 06751**  
**\*\*Business Meeting at 2:00 PM\*\***



## 2024 NUTMEG CHAPTER SHOW TRUCK



1966 CHEVROLET C80 OWNED BY DALE HESER



**Nutmeg Officers  
Board of Directors &  
Committee Chairs**

**President \* Charlie Dainton**  
860-933-5407  
[daintonelectric@gmail.com](mailto:daintonelectric@gmail.com)

**Vice President \* Harold Foscett**  
860-465-7503  
[foscettequip@snet.net](mailto:foscettequip@snet.net)  
[chfoskett@yahoo.com](mailto:chfoskett@yahoo.com)

**Treasurer \* Tom Voccola**  
203-395-4230  
[sticks2fast@mac.com](mailto:sticks2fast@mac.com)

**Secretary \* Betty Jay**  
508-867-4294  
[limrikki@aol.com](mailto:limrikki@aol.com)

**At-Large \* Ken Anderson**  
860-508-7469

**At-Large \* Calvin Neely**  
H 860-929-4417 / C 860-315-4664  
[calvin.neely@snet.net](mailto:calvin.neely@snet.net)

**At-Large \* Peter Yeomans**  
860-742-6796  
[yeomansdor@comcast.net](mailto:yeomansdor@comcast.net)

**At-Large \* Denis Yaworski**  
860-546-9819  
[bulldogdrive@sbcglobal.net](mailto:bulldogdrive@sbcglobal.net)

**Membership \* Lance Dimock**  
860-643-5224  
[dimolalo@sbcglobal.net](mailto:dimolalo@sbcglobal.net)

**Show Chairman \* John Raymond**  
860-608-5033  
[johnraymond1@sbcglobal.net](mailto:johnraymond1@sbcglobal.net)

**Newsletter Editor \* Don Arnauckas**  
H- 860-274-4758 / C- 203-509-7598  
[dwatrans@sbcglobal.net](mailto:dwatrans@sbcglobal.net)

**Social Media/ Facebook**  
Kathy Arnauckas  
H- 860-274-4758 / C- 860-417-8051  
[dwatrans@sbcglobal.net](mailto:dwatrans@sbcglobal.net)

**Jonathan Yeomans**  
860-803-5799  
[Yeomansjon1@gmail.com](mailto:Yeomansjon1@gmail.com)

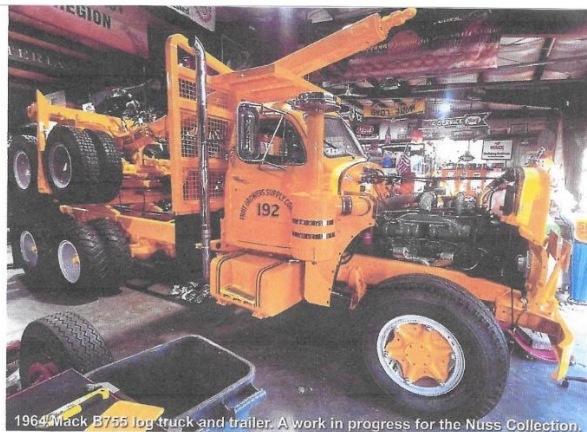
## NUTMEG CHAPTER ATHS MARCH MEETING

MARCH 17, 2024

**Phahl's Mack & Truck Restoration**  
**77 East Street - Route 32**  
**Bethlehem, CT**



### AWARD WINNING RESTORATIONS



1964 Mack B755 log truck and trailer. A work in progress for the Nuss Collection.

**COME EARLY & SEE MATT'S TRUCK & TRAIN MEMORABILIA**  
**Bring your favorite Model or Toy Truck for our Annual**

### **Table Top Toy Truck Show**

**Lunch will be served at 1 PM**

**Business Meeting Begins at 2 PM**

**Directions to March 17, 2024 Meeting at Pfahl's Mack & Antique Truck Restorations** located at 73 East Street, Route 132 in Bethlehem, CT

**\*\*Contact Matt at 203-266-6455 or Charlie at 860-933-5407 with any questions.** Members are encouraged to come early. Light lunch will be served at 1 PM. Business meeting at 2 PM. Bring a snack or dessert to share.

#### **DIRECTIONS TO BETHLEHEM:**

I-84 West to Exit 17. At first traffic light, take Right on to Route 63 North. Continue thru Watertown Center and follow Route 63 for approximately 8 miles. Turn Left on Route 132 (Bethlehem/ Judd Farm Road.) You will see 2 "Entering Bethlehem" signs. Watch for Bethlehem Elementary School on the Left. Pfahl's Restoration (Green sign) will be on the Right. Red Building behind house at 73 East Street. Additional parking is available behind the garage.

**IN CASE OF INCLEMENT WEATHER ON MARCH 17-** We will contact those members via email (if we have your email) and post it on Face Book. If you are in doubt, please give any officer a call and get the answer to "Is the meeting on?" We never know what March might bring in the weather department.



## Minutes of Nutmeg Chapter Meeting January 14, 2024

**Call to Order:** Nutmeg Chapter President Charles Dainton called the meeting to order at 1:55 PM

### **Opening:**

The first meeting of 2024 opened with the Pledge of Allegiance led by Chapter President Charles "Charlie" Dainton. Charlie welcomed everyone who turned out for our first meeting of the new year, and extended a hearty Thank You on behalf of the members to Harold and Cynthia Foskett for hosting our meeting. Those present were encouraged to help themselves to plenty of sandwiches, snacks, and desserts that the Fosketts' provided for us.

**Attendance:** There were twenty-two members in attendance today. There was one guest, Kevin Rice, who came with Denis Yaworski.

### **Secretary's Report:**

A motion was made to accept the Secretary's Minutes of the November 12, 2023, meeting as they appeared in the previous Newsletter. The motion was seconded, and the members voted unanimously to approve the Minutes. It was noted that Betty Jay could not be with us today due to pending inclement weather. Kathy Arnauckas filled in for Betty.

**Treasurer's Report:** Charlie Dainton filled in for Tom Voccola.

Reporting period November - December 2023

1. Savings Account- Interest and Balance Reported

2. Regular Account-Balance Reported

Income: Dues, Members' Meals, Newsletter Ad and the 50/50 drawing from the November meeting.

Expenses: Matthews Catering for November meeting, BTS Graphics and Printing, Postage, and various other office expenses for 2023.

3. Show Account Balance: Donation

4. Prior to his surgery, Tom Bachand provided Harold with all the necessary information that will be needed to turn the records over to our new treasurer, Tom Voccola. Once all the checks from 2023 have cleared the account, which should happen within the month of January, Tom Voccola will open new bank accounts.

Charlie asked for a motion to accept the Treasurer's Report as presented. The motion was made and seconded. The vote was unanimous to accept the report.

5. There was some discussion regarding the posting of balances in the published minutes of the meeting. As has been the custom, we will continue to report only our income and expenses but not the amounts or balances of these accounts. That information is included in our Annual Report to National.

**Membership Report:** Lance Dimock

Lance reported that the Nutmeg Chapter has 143 members and that 43 have not yet paid their 2024 dues. He stated that the envelopes for dues that were in the January-February Newsletter worked well. Envelopes for those who have not paid will be provided in the next issue of the Newsletter. One new member joined us today, John DeLuca.

**Newsletter:** Donald Arnauckas, Editor

Don reported:

1. The deadline for the next Newsletter is January 31, 2024

2. Please update the status of your "for sale/wanted ads." They are free but take up space if no longer relevant.

3. Don is always looking for road stories, truck activities and articles of interest for the readership.

**Website/Social Media:** Kathy Arnauckas & Jonathan Yeomans

Kathy stated that not much is new on this issue. She praised Pete Sears who posts our information on the Website for his efficiency in keeping our site current. She also thanked Jon for assisting with unusual circumstances that may occur on our Facebook page. Members are always welcome to request items to post, just contact Kathy A or Jonathan Yeomans.

## **Truck Show & Toy Barn     John Raymond**

Charlie heard from **John Raymond** who could not be at today's meeting due to illness. Charlie said that John is in the process of ordering Tee Shirts and Dash Plaques. He is aware of the time frame for getting a copy of our Show Poster to National so that our Show can be duly listed in the Route Guide. National is encouraging Chapters to include the ATHS logo on the Show Posters.

**Maggie McCormick** stated that she is attending various Toy and Hobby Shows and handing out Toy Barn Flyers to potential vendors for our Toy Barn. Don and Kathy will prepare new flyers for Maggie as soon as possible.

### **OLD BUSINESS**

There was a discussion regarding bogus emails that appear to be from past and present officers to members requesting a variety of things. It is strongly recommended that you not respond to these emails and certainly do not click on any links that may be included in the email. No one from the Nutmeg Chapter will ever ask you to supply gift cards or any kind of information about the club. You can always contact the member by phone to confirm any odd requests.

### **NEW BUSINESS**

The Board of Directors met prior to the Business Meeting. Those present were Charlie Dainton, Harold Foskett, Don Arnauckas, Denis Yaworski, Calvin Neely, Ken Anderson, and Lance Dimock. Don reported that National has informed Chapters that they should not expect Insurance Certificates until 30 Days prior to the event, and they would like us to include the ATHS logo on the Show Posters. National ATHS needs a copy of our Show Poster before they list it in the Route Guide or provide any Insurance Certificates.

Potential meeting venues were discussed, and board members will be looking into various locations for meetings in March, May, July, September, and November (will be at the Haul of Fame Museum). Dates will be announced once confirmed with the meeting hosts. (Date of March meeting is March 17 at Matt Pfahl's)

### **OTHER BUSINESS**

1. Cares & Concerns: Tom Bachand, Art Jay, Tom Voccola, Rob LaPlante, Richard Dayton, John Raymond.
2. The 50/50 Raffle tickets were not available for this meeting.
3. Charlie Dainton announced that he had some photos, old ads, etc. that were out for anyone to take if they had an interest in them.
4. Cynthia Foskett was in contact with Patty Bachand regarding Tom's very recent eye surgery. Patty said that Tom was doing well, following doctors' orders, and resting as much as possible.
5. Charlie asked if any members needed help for anything due to their illnesses and encouraged folks to let us know if we can help in any way. He encouraged members to reach out to a member who may need a little assistance.
6. Denis Yaworski thanked the Nutmeg Chapter for all its support of the Haul of Fame Museum over the years. He is very grateful for all we do and in turn we are grateful for all that Denis does for the Nutmeg Chapter .

There was no further business to attend to, so Charlie asked if anyone had any stories, comments etc. to bring up. A lively and informative session included a discussion of "stuff we need to get rid of aka find homes for". Art Slie has a perfectly good 1930's era combination wood & gas stove that he hopes someone may want to have; Charlie has two vintage printing presses that he would love to find a home for. Charlie noted that with a little TLC they still can get the job done. One was manufactured in Meriden. Denis Yaworski has plenty of things that might be looking for new homes; Jon Yeomans told us about his latest work project, working with P & W turbines to repurpose them as quick-start fossil-fuel engines to help with power grids that are down. Jon also told us that the recent snowstorm provided his family with the opportunity to go sledding, build a snow man, enjoy hot chocolate & popcorn while watching a movie, enjoying a family snow day. However, he invited Cassidy and Sawyer to ride along while he did some snowplowing chores.... you guessed it, Courtney's plans were put on hold as the children wanted to plow snow! Must be in the DNA.

The meeting adjourned at 2:40, allowing those who had a distance to travel to head for home before the predicted snow squalls began.

Respectfully submitted,  
Kathy Arnauckas



## Last Ride ~~ George Reinholt 1947- 2024

George Alvin Reinholt, a long-time member of the Nutmeg Chapter passed away January 23, 2024, after a tough battle with pancreatic cancer. Born in New Canaan CT in February 1947, George graduated from New Canaan High School. He served in the US Navy stationed in Spain. Prior to moving to Canaan, CT George delivered home heating oil in New Canaan. After moving to Canaan, he worked for Lindell's for the next 28 years. Upon retirement, George and Betsy, his wife of 51 years, moved to Longmont, CO to be near their kids and grandkids. He worked for the past 13 years at his son's business, Reinholt Tree Care.

George is survived by his wife Betsy, sons Timothy & Christopher, and grandkids Cora, Etta, Clover, and Luna, four sisters, one brother and several nieces and nephews.

His obituary states "he will be greatly missed by family and friends. He is best remembered by his mechanical wisdom and knowledge of old tractor engines, antique trucks and various "old school" methods of repairing things."

**A Celebration of Life will be held in June at Reinholt Tree Care. "He was a good honest hardworking man to all who knew him. Our deepest sympathy to Betsy and his sons.**

Many of the long-time members of the Nutmeg Chapter will remember George Reinholt as an active member of the Nutmeg Chapter for many years, always willing to assist at Chapter events and held several offices as needed. After relocating to Colorado, George remained a member of the Nutmeg Chapter.

As far back as I can remember, if you saw George at a Nutmeg function, he was in the company of Al Newhouse, Don Beauchamp and Chico Aragi. They traveled together and always had a good time. These guys did not need to call AAA if they ran into trouble. They had the tools, parts, and knowledge to fix anything. They always got to the truck show and back home. George could repair anything.

I recall asking George what was in the back of his Ford F-8, nicely covered and secure. He said he had just about anything you might need on the road. There was also room for a few items he wanted to sell and room for something he might buy along the way. I heard that he and his friends were known to camp-out in the back of the truck too!

When George moved to Colorado, he drove the F-8 out there with a load. He said the old truck ran well on the way out, but it never adjusted to the higher elevation in Longmont, Colorado. Since it didn't run well, he decided to sell it to someone he knew in Connecticut, and the new owner drove it back to Connecticut.

George needed something to take the place of his old, reliable F-8 and purchased two Jeeps to restore. After his restoration was completed, George enjoyed 4-wheeling. George was not one to be idle and so he was a mechanic at his son's business Reinholt Tree Care for 13 years.

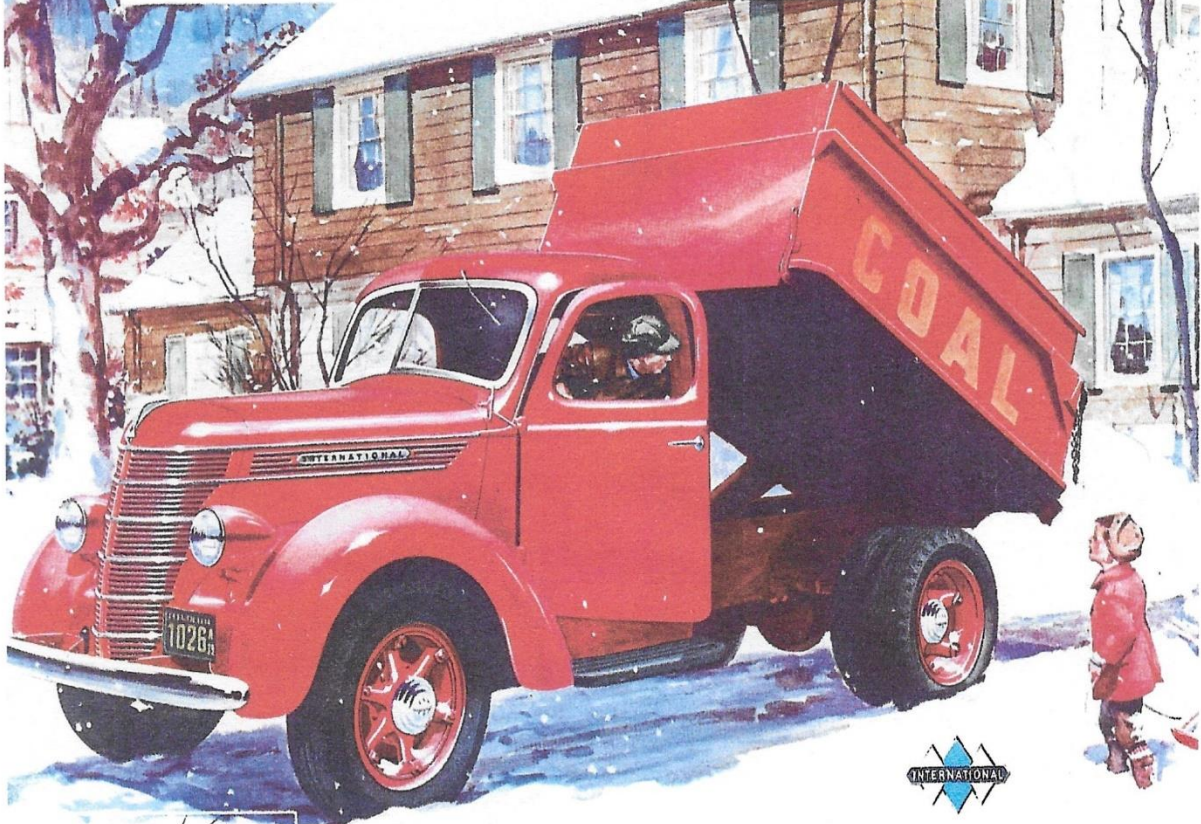


George Reinholt | North Canaan, CT  
1950 FORD F-8





# It takes a TRUCK ENGINE to Stand the Gaff!



ten ditches need digging no sissies need  
ply. It's a job for he-men, with seasoned  
art and muscle and with callouses in  
right places. The same goes for hauling!

A passenger car engine is called on to deliver from a *fourth* to a *half* of its full power most of the time. The average heavy-duty TRUCK engine delivers from *three-fourths* to *all* of its power practically all of its working time.

In terms of delivered energy the output of a TRUCK engine is perhaps *four times as great* per mile of travel. If the average car is disposed of at 50,000 miles, hundreds of hard-working trucks should be entitled to retirement in a few months' time. Nothing could be further from the minds of either the builder or the owner of the good truck. Thousands of International Trucks have traveled upwards of *two or three*

*hundred thousand miles, every mile a truck mile.*

The automobile tests many a fine quality in an engine, but the TRUCK puts up with *a great deal more!* For more than a generation the builders of International Trucks have built ALL-TRUCK trucks—and TRUCKS ONLY. This will give you some idea as to why men buy more heavy-duty Internationals than *any other three makes combined.*

Remember that International sizes range from  $\frac{1}{2}$ -ton to powerful 6-wheelers. See any International dealer or Company-owned branch.

INTERNATIONAL HARVESTER COMPANY  
(INCORPORATED)  
180 North Michigan Avenue Chicago, Illinois

Copyright 1935, by International Harvester Company, Incorporated

## INTERNATIONAL TRUCKS





The position among commercial vehicles occupied by the Riker Truck is due to the quality of service it delivers, whether to manufacturers, or to the Nations.

It takes the highest quality of Workmanship to produce the highest quality of Service. The Riker Worm Drive Truck is built by The Locomobile Company of America.

Delivery of three and four ton sizes is available to those to whom continuous and economical service is of prime consequence.

# RIKER

Built by **THE LOCOMOBILE COMPANY** of America  
BRIDGEPORT, CONNECTICUT

Send for Book "RIKER TRUCKS IN ACTION"





The annual Friends of Autocar meeting was held on Sept. 16, 2023 at the Boyertown Museum in Boyertown, PA. This was the first time the meeting was held in Boyertown, and the Museum proved to be an excellent venue for Autocar enthusiasts and the former employees of Autocar to gather. The Museum showcases many trucks of various makes. The weather was perfect for the twenty-five Autocars that were on display including some new Autocars from the factory. One hundred people attended the luncheon which included many presentations on the History of Autocar. Many Autocar fans brought memorabilia that held the attention of the attendees.

It was obvious that much planning and work went into this annual event. Ted Goldsborough, Bob Gabrick, and George Murphy did a great job in organizing the event assisted by the Boyertown staff and volunteers.

If you have a chance, attend future Friends of Autocar meetings. You will not be disappointed.





## Friends of Autocar continued



Large Scale Autocar models over 100 years old.

## All photos by Don Arnauckas



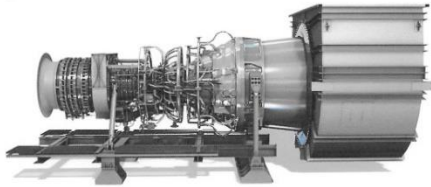
On display at the Boyertown Museum.





#### **A Special Thank You to Betty Jay**

*As you can see from the list of members under Cares & Concerns, our secretary Betty Jay has been quite busy keeping in contact with many of our members. Most might not know this, but Betty sends cards to members once she learns of their illness etc. Betty has been doing this for many years. It is high time that we acknowledge her care and concern for our members during difficult and trying times. Thank you for all you do to cheer us up when life has thrown a roadblock our way. It is appreciated!*



Pratt and Whitney PW4000 aircraft engine converted to an industrial FT4000.

While not necessarily Truck related, **Jonathan Yeomans**, a past president of the Nutmeg Chapter, shared his story on his current project at our recent meeting. With all the talk about alternative energy these days, we think you will find his commentary very interesting and informative. Thanks Jon for keeping us “in the know!”

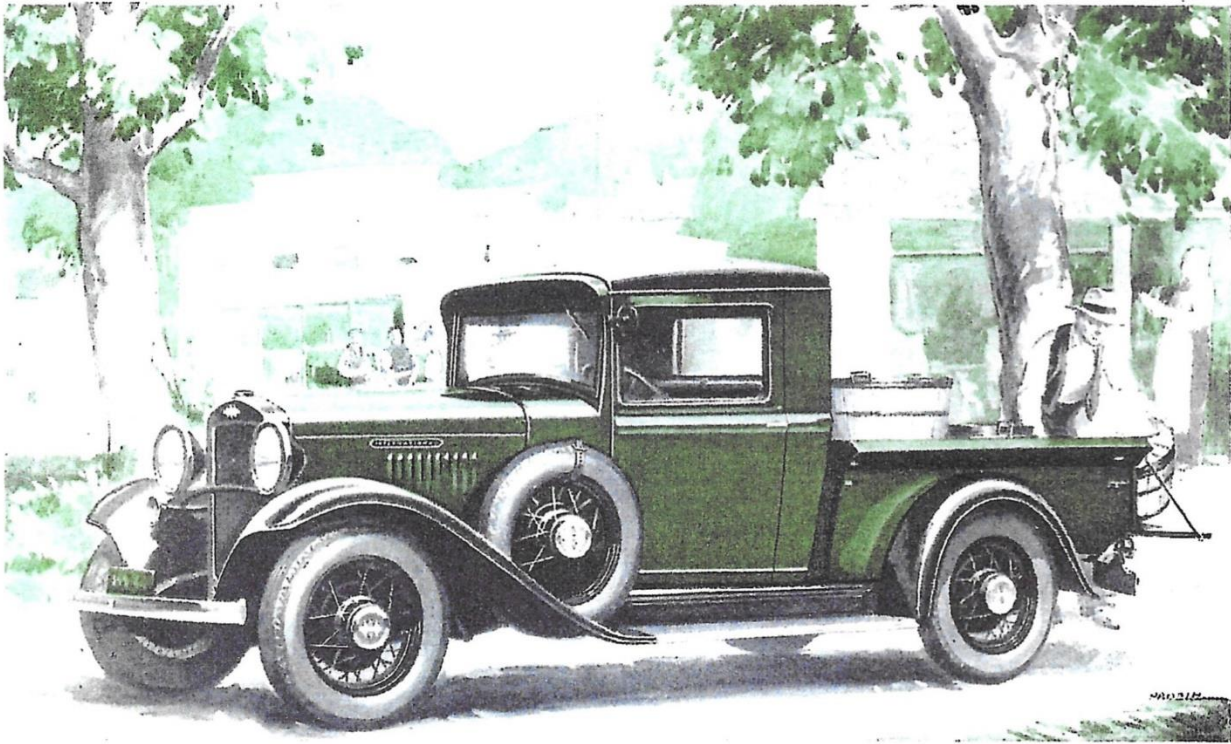
Jonathan has been working on the commissioning of a new gas turbine in New England that utilizes Pratt and Whitney Jet Engine technology for electrical power generation. Jonathan works for Mitsubishi Power Aero in Glastonbury, CT where his company provides ‘Aero-Derivative’ Gas Turbine Power Generation Units all over the world. For those living in the area, you’re likely familiar with Pratt and Whitney calling CT home. P&W had a spinoff business that modified the flight jet engines into an industrial use engine which ultimately was purchased by Mitsubishi Power. Because a Flight Jet Engine is designed to startup and reach full power in only a few minutes, they are a great basis for a gas turbine power unit where electrical power is needed at a moment’s notice. In the new age of Green / Renewable energy, the power output from such sources is more volatile than traditional means of electric generators. The Aero-Derivative gas turbine is an excellent complement to have the ability to startup and provide full power (25-140 Mega Watts) in less than 10 minutes.

Jon has been working on a project delivering a new Gas Turbine Power Plant in New England capable of reaching 70 MW to offset the Wind and Solar in the nearby area to stabilize the power grid. This unit is expected to be fully commercial by May 2024 and uses a Pratt and Whitney PW4000 aircraft engine converted to an industrial FT4000. A quick YouTube search for ‘What is an Aero-derivative Engine? PW4000 to FT4000’ explains the small differences between our gas turbines and the flight engines for those curious. Hopefully those truckers with an interest in either power generation or P&W aircraft engines find this story of some interest. Feel free to contact Jonathan if you want to hear more.



From the Jim Semon Collection **What is the Year, Make, Model of this MYSTERY TRUCK. See Page 12**





## Here It Is! The New Half-Ton, 6-Cylinder International Model D-1 . . . A Light Truck at Low Price

**T**HIS announcement will be welcome news to thousands of dairymen, fruit growers, truck gardeners, merchants, and general delivery men. They have long looked for a half-ton model from International Harvester. They have missed International *quality* in the low-price field.

For it is on *quality* that International Harvester has built its outstanding success in automotive manufacture. Because of *quality* it has steadily increased its leadership among full-line truck manufacturers, greatly improving its relative position during the recent difficult years.

It has established this record on chassis prices never lower than six hundred dollars and ranging up to more than six thousand. High reputation, dependable performance, and unfailing service have brought new International buyers in increasing thousands.

Now new conditions, created by the times, have

given us our opportunity. *Today* International Harvester provides another product of high quality in the International Half-Ton Model D-1.

This new truck is being built strictly according to International specifications in one of the finest, most efficient plants in the automotive industry. The truck has already been put into quantity production and the savings of an anticipated large volume are being passed on to truck users.

This new 6-cylinder truck at its remarkably low International price takes with it, of course, every guarantee that every International Truck carries. It is safeguarded by the nation-wide service that makes every International more valuable to its owner throughout the years of its life.

See the new half-ton International at the first opportunity. Write us for complete catalog and for address of nearest International showroom where the truck may be seen on display.

# \$360

... for the 113-inch wheelbase 70 h.p. chassis f. o. b. factory (tax extra). The illustration shows the new International Model D-1 with handy pick-up body. Other bodies are available to meet every requirement.



INTERNATIONAL HARVESTER COMPANY  
606 So. Michigan Ave. OF AMERICA  
(Incorporated) Chicago, Illinois

# INTERNATIONAL TRUCKS



## NUTMEG FOR SALE / WANTED



With the sale of the Handcraft Museum Annex, there is a surplus of trucks parked outside the Haul of Fame Museum. If you have visited the Haul of Fame Museum in the past, some of these unrestored trucks might be of interest to you. Feel free to share this with other antique truck enthusiasts. Photos are not recent. Located at the Haul of Fame Museum, 133 Packer Road, Canterbury, CT. Contact Denis Yaworski at 860-884-1171



**VERY RARE Late 1930's Moreland** - Four Door Crew-Cab (Drivers Door in cab). Gas-powered, non-running. This is a rare west-coast truck manufactured in Burbank, CA. **BEST OFFER**



**1956 GMC Tractor** - Gas Powered, Non-running Parts Truck. **BEST OFFER**

**MYSTERY TRUCK** was seen at a small truck stop near Bellevue Ohio. The owner said he 'cobbled up a couple of COE's to make this personalized truck.

## Haul of Fame continued-



**1960 Brockway 257T** - Cummins-powered, Non-running Parts Truck. **BEST OFFER**

**ALSO FOR SALE** in this collection are many other trucks too numerous to mention here. Contact Denis Yaworski at 860-884-1171 for more information.

## FOR SALE



**SNAP-ON Torque Wrench 500 LBS 41-inch 3/4-inch drive.**

**BEST OFFER.** Contact Don at 860-274-4758

## FOR SALE



**1999 GMC 3500 4x4** 6.5 Turbo Diesel, Custom Paint with Metal Flake, Clear Coat. 10 FT Custom Dump Body, Double Wall, No Posts Showing. 84,000 Miles. Excellent Condition. \$35,000 OBO. Truck is located in Bainbridge, NY. Call Glenn at 607-244-3515.

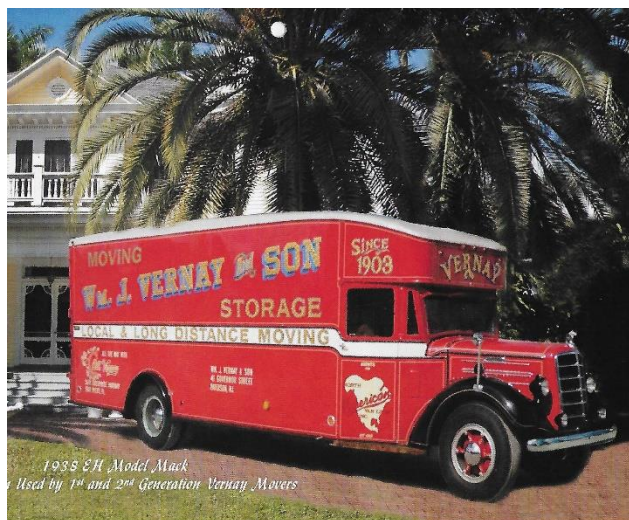


## MULTIPLE TRUCKS FOR SALE



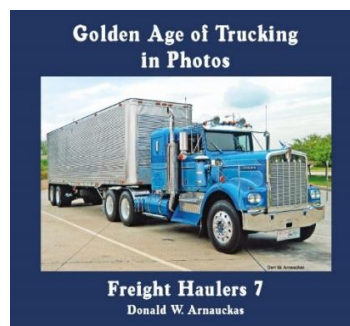
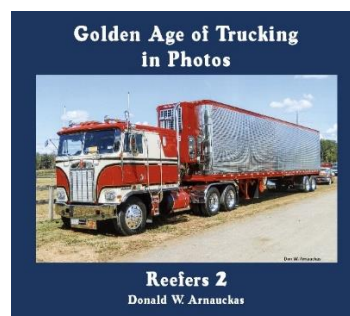
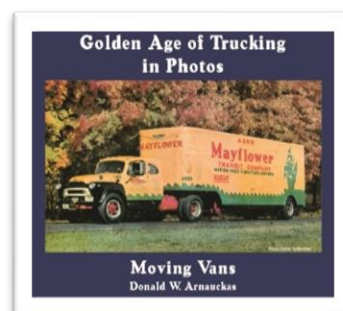
Many retired Autocars, Diamond Reos, Brockway Dump Trucks & other equipment are for sale. F.S. Lopke, Inc. Located in Apalachin, NY Exit 65 West off I-86 & Rt.17. Contact Cody Gregg at 707-972-5218

## FOR SALE



**1938 Mack EH Model** Restored and always garaged. Has 22K gold lettering. Owner retired. Asking \$65,000 but will consider any reasonable offer. Located in Fort Meyers, FL. For further information, call Bill Vernay at 239-694-8878.

## Golden Age of Trucking in Photos By Donald W. Arnauckas



A series of books for trucking enthusiasts by Don Arnauckas. Titles include Moving Vans, Dump Trucks, Tow Trucks & Wreckers, Tankers, Reefers, Flat Beds and Freight Haulers. \$40 plus \$6 Postage for each book. Contact Don at 860-274-4758 or [dwatrans@sbcglobal.net](mailto:dwatrans@sbcglobal.net) to request a brochure.



Awaiting Spring

From the Jim Semon Collection



## TABLE TOP TOY TRUCK SHOW

### MARCH 17<sup>th</sup> MEETING

We all know our favorite antique trucks do not come out in March, so we are bringing back the popular **Table Top Toy Truck Show** for our March 17<sup>th</sup> meeting. There will be no worries that they will not start, no need to worry about those nasty chemicals on the road, and the great news is that they won't need to be washed after the show! Please bring any Toy Trucks, Model Trucks, Childhood Sand Box Toys, Models of your 'Real' Truck, anything along this line that can be displayed on a table top. We would love to hear your story of your favorite treasure from your collection. And while we are at Matt's, be sure to take a look at his extensive toy and huge train collection in the train building. Guaranteed to make your afternoon memorable.



### SUPPORT YOUR CHAPTER

#### **Your Business Card Here**

*Ask your favorite business to place an AD*

\$15 for one issue - \$50 for 6 Issues

Contact Don at [dwatrans@sbcglobal.net](mailto:dwatrans@sbcglobal.net)

or 860-274-4758

### Maggie is Looking for Toy Barn Vendors!

Maggie McCormick recently attended various Toy Shows in Massachusetts & Connecticut with our 2024 Toy Barn flyers in hand. She hands out our flyers to prospective vendors and reports that several have expressed an interest in attending again this year. Thank you, Maggie, for your enthusiasm and dedication to the Nutmeg Chapter. Give Maggie a call at 860-869-1160.

## Colonel Arnold Briggs

tel. (508) 317-7726

[colonelbriggs@aol.com](mailto:colonelbriggs@aol.com)

175 Blackmore Pond Rd.

West Wareham, MA 02576-1427



## TRUCK COUNTRY

USED PARTS FOR WORK TRUCKS

**860-423-6004**

GMC

CHEVROLET

DODGE

Ford

TRUCKCOUNTRY.us | WILLIMANTIC, CT

Harold Foskett Jr.

# FOSKETT

EQUIPMENT INC.

TRACTORS & IMPLEMENTS

*Woodstock, Ct*

Branson  
TRACTORS

Bus. (860) 928-5748

Fax (860) 928-6816

[foskettequip@snet.net](mailto:foskettequip@snet.net)



**BILL SEMPLE**  
"POPS GARAGE"  
Old Trucks  
License Plates  
Toy Trucks

Cell: 978-460-0465  
Home: 978-568-8165  
[oldtrucksfun@verizon.net](mailto:oldtrucksfun@verizon.net)

32-A Wilkins St.  
Hudson, MA 01749

## Golden Age of Trucking Publishing

Books • Literature • Photos

Don Arnauckas

860-274-4758

[dwatrans@sbcglobal.net](mailto:dwatrans@sbcglobal.net)

14 Avalon Avenue  
Oakville, CT 06779



## 2024 CALENDAR OF EVENTS

**DISCLAIMER:** This list is compiled from a variety of sources at the time it is published. It is best to call ahead and check with the organization to verify dates and locations. You can check the latest copy of the ATHS Wheels of Time, ATCA's Double Clutch or their websites for more events. Let us know of any errors or omissions!

- Mar 17** **ATHS NUTMEG CHAPTER MEETING** at Pfahl's Antique Truck Restorations, 73 East St – Route 132, Bethlehem, CT 06751. Business Meeting at 2:00 PM. Members are invited to bring a snack or dessert to share. Business meeting at 2PM. Bring your favorite childhood toy or collectible for the Table Top Toy Truck Show. See page 2 for more details. Come early and enjoy Matt's collections of truck & train memorabilia.
- May TBD** **ATHS NUTMEG CHAPTER MEETING** Location to be determined.
- Jun 6-8** **ATHS NATIONAL SHOW & CONVENTION** held in York, PA. Check the current issue of Wheels of Time or go to the website at [www.aths.org](http://www.aths.org) for further details.
- Jun 8 & 9** **ATCA CT Yankee Chapter Truck Show**, Bethlehem Fairgrounds, Route 61, Bethlehem, CT 8am to 4pm Trucks, Tractors, Motorcycles, Construction Equipment. Contact John Famiglietti at 860-307-4372 for details.
- Jun 9** **ATHS-ATCA CONVOY** from York, PA to Macungie, PA. More details as they become available.
- Jun 13-15** **ATCA's 44<sup>th</sup> Annual National Meet at Macungie Memorial Park**, Macungie, PA. For more information go to <https://www.antiquetruckclub.org>
- Jun 23** **ATHS NUTMEG CHAPTER ANNUAL TRUCK SHOW & FLEA MARKET** (always the Sunday after Father's Day) Brooklyn Fairgrounds, Route 169, Brooklyn, CT. Show hours 8 am to 2:30 pm. Contact Show Chairman John Raymond at 860-608-5033 (cell) for any information or questions. Visit our website at [www.nutmegchapteraths.com](http://www.nutmegchapteraths.com) and our Facebook page at [www.facebook.com/nutmegATHS](https://www.facebook.com/nutmegATHS) for updates.
- JULY TBD** **ATHS NUTMEG CHAPTER MEETING** Location to be determined.
- Jul 19-20** **7<sup>th</sup> Annual Gear Jammer Magazine Show**, Epping, New Hampshire. Details to follow.
- Jul 20-21** **ATHS Pine Tree Chapter Gathering** at the Owls Head Transportation Museum, Owls Head, Maine
- Aug 2-4** **Northeast Rockbusters Antique Construction Equipment Show**, Concord, New Hampshire. Details to follow.
- Aug 11** **ATCA Mid-Hudson Chapter Annual Show**, at the Ulster County Fairgrounds, 249 Libertyville Rd, New Paltz, NY from 9am to 3pm. Contact Jim Bracco @845-206-5091, Mike Fowler @845-883-7191 or Barbara Dawes at [renshidawes@gmail.com](mailto:renshidawes@gmail.com)
- Aug 17-18** **ATCA Granite State Chapter Old Truck Meet (aka Barrington)** Location to be announced.
- Aug 24-25** **ATCA Bay State 22<sup>nd</sup> Annual Show**, Bolton Fairgrounds in Lancaster, MA. Details to follow.
- Sept TBD** **ATHS NUTMEG CHAPTER MEETING** Location to be determined.
- Sept 21-22** **ATHS HUDSON MOHAWK CHAPTER'S 33<sup>TH</sup> Annual Truck Show**, Saratoga County Fairgrounds, Ballston Spa, NY. Contact [HUDSONMOHAWKATHS@gmail.com](mailto:HUDSONMOHAWKATHS@gmail.com) or phone 518-371-0288
- Nov TDB** **ATHS NUTMEG CHAPTER ANNUAL MEETING** at the Haul of Fame Museum, Canterbury. Date to be determined.

**WELCOME NEW NUTMEG MEMBER**

John DeLuca – Woodstock, CT

*Dedicated to preserving the dynamic history of trucks, the trucking industry, and its pioneers.*



[www.nutmegchapteraths.com](http://www.nutmegchapteraths.com)



[www.facebook.com/nutmegATHS](https://www.facebook.com/nutmegATHS)

## CARES &amp; CONCERNS

- \* **Tom Bachand** is recovering from his long-awaited cornea transplant that took place in mid-January. Tom told us that he has about 90% vision restored in that eye and his recovery is progressing. We all wish Tom a complete recovery and that his full eyesight will be restored.
  - \* **Joanne Rooney** was hospitalized for several days following routine eye surgery. Joanne reports that recovery is very slow and she is staying close to home while she recovers. Healing prayers & get well wishes for a complete recovery.
  - \* Likewise, **Matt Pfhal** has had major eye problems, a detached retina. Matt reported recently that his recovery is a slow process and he still has a few more weeks to go before he notices improvement. Members wish Matt all the best as he recovers from this unexpected turn of events. We look forward to our meeting at his place in March.
  - \* **Art Jay** was hospitalized in December and spent a few days in rehab. We hope he can stay well. Art told us he appreciates hearing from those who have reached out to him these past few months.
  - \* **Richard Dayton** underwent a hip replacement just before the holidays. He told us that his recovery is going very well, and he was able to spend the month of February in Florida. We are happy to report his recovery is on target.
  - \* **Robbie LaPlante** is recovering from knee surgery that he had shortly after our January meeting. We send our best get well wishes to Robbie and we hope that his rehab is going well, and he can get back to work in the very near future.
  - \* **George Fiebe** was hospitalized for over a week in late January with some major health issues. We send healing wishes as he recovers his strength and starts feeling better.
  - \* **Donna Liamis** was the victim of an unfortunate fall while vacationing in Florida. Donna is recovering from injuring her ribs and elbow, which we all know take a while to heal. Hope each day is better than the last. Jim and Donna attended the ATCA Winter National Truck Show during their time in Florida.
  - \* The Chapter extends our sincere sympathy to **George Reinholt's** family and friends. George died on Jan 23 of pancreatic cancer. Thanks to Chico for keeping us informed about George. He was a long-time member of the Nutmeg Chapter and remained a member after he and his wife moved to Colorado. His obituary is on page 5.
  - \* It was good to hear from Bob West, Jr. that **Bernice West** is doing well at home these days. Many were asking about her at our January meeting. She of course loves hearing from Nutmeg members!
- It is important to *Stay in Touch with each other. Let Charlie or Don know of any Cares and Concerns of a member! Thanks***

**Nutmeg Chapter of the American Truck Historical Society Membership Application****\*\*\*2024 MEMBERSHIP DUES - \$15 PER YEAR \*\*\*****Please Complete the Application Below & Return with Your Payment****Mail to Membership Chairperson, Lance Dimock, Nutmeg Chapter-ATHS,****99 Notch Road, Bolton, CT 06043 Phone: 860-643-5224 or E-mail dimolalo@sbcglobal.net****Make check or money order payable to "Nutmeg Chapter ATHS"**

The Nutmeg Chapter continues to UPDATE the Membership Roster with current information. Please complete the Application below and return it with your payment of \$15. This will enable us to keep our members informed via mail, email or phone of any important information such as cancelling or re-scheduling our events. We DO NOT share email information. Thank you in advance for your help!

IS THIS A NEW MEMBERSHIP \_\_\_\_\_ RENEWAL \_\_\_\_\_

NAME \_\_\_\_\_

SPOUSE'S NAME \_\_\_\_\_

MAILING ADDRESS \_\_\_\_\_

CITY \_\_\_\_\_ State \_\_\_\_\_ Zip/Postal Code \_\_\_\_\_

Email \_\_\_\_\_ (Used Only For Important Notifications &amp; Newsletter, if requested.)

Phone Number (\_\_\_\_) \_\_\_\_\_ Cell Phone (\_\_\_\_) \_\_\_\_\_ No phone calls, just Newsletter \_\_\_\_\_

**In what form do you wish to receive The Steering Column?** Hard Copy \_\_\_\_\_ E-Mail \_\_\_\_\_ Both \_\_\_\_\_

Are you a Veteran? Yes \_\_\_ No \_\_\_ What Branch of Military? \_\_\_\_\_

**IF YOU OWN A TRUCK OR HAVE A SPECIFIC INTEREST IN TRUCKS & THE INDUSTRY, PLEASE ENTER INFORMATION BELOW**

MAKE \_\_\_\_\_ MODEL \_\_\_\_\_ YEAR \_\_\_\_\_

NUTMEG CHAPTER OF THE AMERICAN TRUCK HISTORICAL SOCIETY ESTABLISHED IN 1983 PUBLISHES THIS NEWSLETTER. EMAIL: dwatrans@sbcglobal.net ATHS BYLAWS STATE THAT LOCAL MEMBERS MUST ALSO BE A NATIONAL MEMBER IN GOOD STANDING.